



# LMU

2025

# Admitted Student Guide

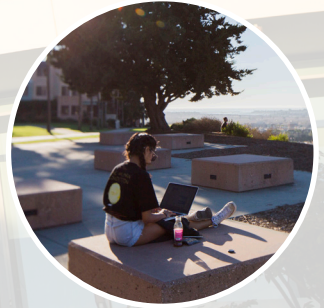


## CONGRATULATIONS, FUTURE LIONS!



As students begin their academic journey at Loyola Marymount University, they are immersed in a world of new experiences and opportunities for self-discovery. Students explore passions, form friendships, and gain diverse perspectives. Through classes, social interactions, and personal reflection, they begin to shape their sense of self, finding their place in a larger community and charting the path for who they want to become.

On campus, students can join a variety of clubs, find part-time jobs, and obtain research opportunities. Off campus, they can explore Los Angeles or secure internships throughout the city, which offer valuable hands-on experience in industries like entertainment, technology, and business.



## ENGAGE. DECIDE. COMMIT.

Engage with university deans, faculty, professional staff, and students as you take your next steps to Become an LMU Lion and join our campus community. We have a wide variety of programming, specially curated with you in mind, available through the end of April. Sessions are available on campus, online, and on demand.

 [Imu.edu/becomealion](https://imu.edu/becomealion)

# ACADEMICS



## Study Abroad

LMU's Study Abroad programs provide students with exceptional opportunities to learn from other cultures, earn credits towards graduation, and develop a more global perspective.



## Academic Resource Center (ARC)

The ARC provides academic support through tutoring, academic planning, and advising. The center also provides assistance for first-generation college students through LMU's First To Go program.

## Library Programming

Students can check out Faculty Pub Night, which highlights a diverse, interdisciplinary range of research publications and creative works created by LMU faculty, or find themselves spooked at the annual Haunting of Hannon, where the library is transformed into a haunted house by LMU theatre majors.



# RESEARCH OPPORTUNITIES



## Office of Research and Creative Arts (ORCA)

ORCA supports LMU students' research and creative work, viewing it as an opportunity for high-impact, active learning. Participating students enjoy one-on-one faculty mentorship in their discipline to raise the quality and profile of their work, allowing them to disseminate their research and creative results within and beyond LMU.

## Summer Undergraduate Research Program (SURP)

SURP is a six-week program designed to provide students with insight into the research process. SURP enhances undergraduate education by providing administrative and financial support, academic workshops, and on-campus housing opportunities for students wishing to engage in faculty-guided research and creative project opportunities during the summer.

## The Independent Undergraduate Research Program (IURP)

IURP provides funding through work-study or academic credit to undergraduate students completing independent research projects under faculty mentorship. In addition, IURP offers administrative support, guidance, and a community of undergraduate research and creative artists and scholars.

# INTEGRATING MIND, BODY, AND SPIRIT

## The Pam Rector Center for Service & Action (CSA)

Striving to challenge the status quo, Jesuit educated LMU Lions seek out the “magis” - a Latin term describing our desire to “restlessly strive for the more universal good.” The Pam Rector Center for Service and Action is LMU’s hub for action-based fellowship, including service organizations focused on service and social justice initiatives.

→ [lmu.edu/csa](https://lmu.edu/csa)

## Campus Ministry

Dedicated to fostering the mission of Loyola Marymount University, especially the service of faith and the promotion of justice, Campus Ministry supports a wide array of programs and activities that meet the spiritual needs of LMU students.

→ [mission.lmu.edu/ministry](https://mission.lmu.edu/ministry)

### All are Welcome

The “service of faith” component of our mission encompasses the many ways in which we engage in our Catholic intellectual, cultural, and religious heritage. It also honors the reality of religious pluralism on our campus and calls on our community to embrace interfaith dialogue.

→ [mission.lmu.edu/interfaith](https://mission.lmu.edu/interfaith)



# CLUBS AND ORGS



## Student Leadership and Development (SLD)

Getting involved at LMU is easy! From academic and professional organizations to arts, performance, and media. Students can enjoy club sports, intramural sports, recreation and leisure, intercultural, political, or service centered activities. LMU is also home to a thriving sorority and fraternity life community.

With over 200 student organizations at LMU, our helpful LEO search engine allows students to find a recognized student organization (RSO) that meets their interests.

➔ [leo.lmu.edu](http://leo.lmu.edu)



## Associated Students of LMU (ASLMU)

ASLMU, our student government, empowers the voice of the students and actively promotes a vibrant campus life.

## Club Sports

Club Sports are RSOs formed by individuals motivated by a common interest and desire to participate in a favorite sport activity. Open to all students, regardless of skill level, they exist to promote and develop interest in those sports. Its members learn new skills, refine existing ones, engage in competition against other colleges/universities, and enjoy the recreational and social fellowship of sports.

## ASLMU EVENTS



## Fallpalooza

LMU's annual fall concert brings students together for a vibrant evening of live music, creating an unforgettable atmosphere of community and excitement.

## SpringChella

The ultimate spring concert experience, SpringChella, offers students an unforgettable night of live music, high-energy performances, and festival vibes featuring incredible artists and surprise guest performers.

## Christmas Tree Lighting

The Christmas Tree Lighting features performances from our very own LMU choirs, a blessing of the Christmas tree, holiday crafts, cookies, and mugs of hot cocoa. Be sure to collect the special Christmas mug that ASLMU redesigns every year!

# LIVING IN LION NATION

## Important Housing Dates\*

April 3: Housing Application Opens

May 19: Priority Housing Deadline

Mid-July: Housing Assignments Released

Late August: Move In

First-years are housed in community style housing while transfers and continuing students receive suite or apartment style housing.

\*Housing availability is not first come, first served.

➔ [admission.lmu.edu/housingoptions](https://admission.lmu.edu/housingoptions)



## Living Learning Communities and Theme Housing

Living Learning Communities (LLCs) are for students who share a common interest or academic pursuit, to live and study in a curricular and co-curricular educational environment. Theme Communities provide a living environment for intentional programs and extracurricular activities that center around a shared theme or common interest.



## LMU HANGOUTS

### The Living Room

The Living Room is an entertainment venue that hosts live music, comedy, open mic, slam poetry and more. The Living Room is also used as a quiet lounge space, which students may use for studying in groups, hanging out, and relaxing when no performance event is taking place.



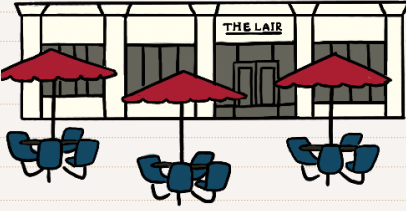
### Sunken Garden

Soak up the sun and lounge with friends on LMU's Sunken Garden. This is a campus staple for student picnics and friendly games of frisbee. Sunken Garden offers a peaceful and scenic space for students to unwind, relax, and study.



# LMU DINING

Students enjoy a variety of campus dining venues with ample meal and snack options. All students living in the residence halls are required to purchase a meal plan.



## The Lair Marketplace

The Lair is LMU's only cafeteria style eatery on campus. The Lair offers items to suit every taste, from cozy comfort foods to dishes composed with an international flare. We are proud to offer a dining program complete with signature brands and menu selections that include just about every item you can imagine.

## The Crimson Lion

For an elevated dining experience, students like to visit the Crimson Lion. Enjoy a full service dining experience complete with patio seating.

## COFFEE SHOPS

The coffee shops at LMU are popular social hubs where students gather to study, relax, and fuel up between classes.

## The Lion's Den

The Lion's Den is LMU's only completely student-run coffee shop. The large seating area gives students a space to gather and study. The energetic, friendly student staff of the Lion's Den, which is managed by Campus Recreation and Student Facilities, creates a unique and inviting atmosphere that makes it one of the most popular places to be on campus.



## Starbucks

Starbucks is conveniently located inside the Hannon Library and features delicious, handcrafted beverages and great-tasting food. Students who are studying late at night appreciate being able to walk right over and order their favorite caffeinated beverage.



## Coffee Cart

Lion Boba and Coffee Cart is a locally owned and operated coffee and boba cart located in front of Foley Fountain. Students enjoy the sights and sounds of Foley Pond as they prepare assignments and wait for their next class to start.

## ONECARD FLEXI-DOLLARS

Students can use their LMU FLEXI-Dollars by presenting their OneCard at certain off-campus locations:

- Benny's Tacos
- Bristol Farms
- Domino's Pizza (Westchester)
- Grubhub
- 76 Gas Station



# PRIORITIZING WELLNESS

## Wellness Wednesdays

Wellness Wednesdays promote students taking time for themselves and focusing on personal wellness. This weekly event features programming, arts, crafts, and local vendors. On a rotating basis, vendors sell produce from local farmers, pastries, tamales, coffee, and more.

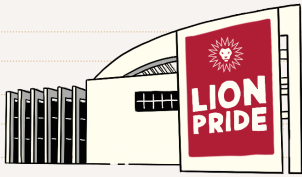


## Food Pantry

The on-campus Food Pantry is available to all students who are struggling with food access and insecurity.

## BURNS RECREATION

Campus Recreation & Student Facilities—including the Burns Recreation Center— promote the education of the whole person by offering programs and services that integrate mind, body and spirit. These activities provide the campus with an outlet to enjoy leisure time purposefully, while building a stronger LMU community.



## Intramural Sports

Students can break away from their studies and have some fun competing against fellow Lions in Intramural Sports. They can join a team or form their own and make new friends along the way. Open to all students, Intramural Sports are a great way to get involved in recreational sports at LMU and cultivate one's individual and team sportsmanship.



## FitWell Classes, Massage Therapy and Personal Training

Visit FitWell for a wide variety of free fitness classes such as yoga, cycling, or F45. Students can also utilize FitWell's professional training services for individualized workout plans to reach their fitness goals, and then recharge by booking a massage with FitWell's certified massage therapists.



## Campus Recreation's Outdoor and Adventure Recreation (OAR)

The OAR program offers students the opportunity to get off campus and explore the great outdoors in Los Angeles and beyond. From local day hikes to overnight camping trips, indoor climbing nights, and more, OAR is your place to find a new passion and stay in touch with what you love.







## LION SPIRIT

### LMU Game Day

Sports fans and concession connoisseurs alike appreciate the excitement of game days. Students get a free ticket to all athletic events.

### The Mane Zone

The Mane Zone is the official student fan section of the LMU Lions.



## LMU and Los Angeles Rams Partnership



LMU is the exclusive higher education partner of the Los Angeles Rams. LMU hosted the Los Angeles Rams' 2024 Training Camp last summer on its Westchester campus. Rams fans and the LMU community had the opportunity to watch open practices on select days.

This partnership includes student internship opportunities within business operations, analytics, marketing, and more.

### A Deep Dive into Sports Economics

Instructor Shirin Mollah and her sports economics students got an inside look at Rams operations and SoFi Stadium in a two-day immersion course.

# JOBS & INTERNSHIPS

Whether students pursue a job on or off campus, it is essential for them to develop real-world skills that will prepare them for life beyond the classroom. LMU provides a wealth of resources, including internship opportunities in L.A., on-campus jobs, and support for resume writing to help students succeed in their professional journey.

## Student Employment Services (SES)

Student Employment Services (SES) at LMU provides part-time employment opportunities, workshops, and services to further students' professional development and post-graduate success.

Having an on-campus job at LMU offers the perfect balance with class schedules, helping students develop time management skills, gain valuable professional experience, and build meaningful connections with campus staff, all while earning money and enhancing their academic success.

➔ [studentaffairs.lmu.edu/ses](https://studentaffairs.lmu.edu/ses)



## CAREER AND PROFESSIONAL DEVELOPMENT (CPD)

Career and Professional Development provides resources and experiences to help students leverage their Jesuit education to achieve their full professional potential, including assistance with internships, resume building, networking, and more.

➔ [careers.lmu.edu](https://careers.lmu.edu)

## Not Just a Career, but a Calling

A Jesuit education uniquely positions students to pursue a vocation, rather than just a job. Each year, LMU Career and Professional Development encourages students to step away from their day-to-day to learn how to align their career interests with a true sense of purpose.



# GUIDE TO LOS ANGELES

Los Angeles boasts a rich tapestry of cultural experiences that span food, arts, natural beauty, and wellness. This guide offers an overview of nearby Southern California experiences that enrich campus life. With our location just five minutes from **Los Angeles International Airport (LAX)**, students have the world at their fingertips, ready to discover and explore.



## Cultural Experiences

- The Broad
- Academy Museum of Motion Pictures
- Getty Center in Brentwood
- Los Angeles County Museum of Art (LACMA)



## Theme Parks

- Disneyland
- Knott's Berry Farm
- Six Flags
- Universal Studios



## Dining

- Runway Playa Vista
- Restaurants on Lincoln Blvd
- Manhattan Village
- El Segundo, Main Street
- Playa Del Rey
- First Fridays in Venice Beach



## Outdoor Exploration

- Bluff Trail
- Griffith Observatory
- Hiking trails in Griffith Park
- Hollywood Sign viewing
- Street art tours in Melrose Ave and Venice



## Entertainment Venues

- Cosm
- Crypto Arena
- Dodger Stadium
- Hollywood Bowl
- Intuit Dome
- The Forum
- Sofi Stadium



## Shopping

- Westfield Culver City Mall
- Waterside at Marina Del Rey
- Manhattan Village
- 3rd Street Promenade
- Century City Mall
- Farmer's Market at Runway Playa Vista



# NEXT STEPS

## 1 SUBMIT YOUR DEPOSIT

Commit to LMU through the online portal by May 1.\*

*\*First Year Student Deadline*

➔ [futurelions.lmu.edu](https://futurelions.lmu.edu)

## 2 EXPLORE SUMMER ENROLLMENT

Incoming first-year and transfer students are eligible to enroll in summer session courses ahead of their first fall semester. Summer sessions occur from May 19–June 27, 2025, and June 30–August 8, 2025

➔ [summer.lmu.edu/earlystart](https://summer.lmu.edu/earlystart)

## 3 ATTEND NEW STUDENT ORIENTATION

New Student Orientation begins on August 21 and concludes by the first day of class on Monday, August 25, 2025. Additional details can be found on the orientation website.

➔ [orientation.lmu.edu](https://orientation.lmu.edu)

© 2025 Loyola Marymount University

